

RETRACTABLE GREEN HOUSE



www.blustal.com

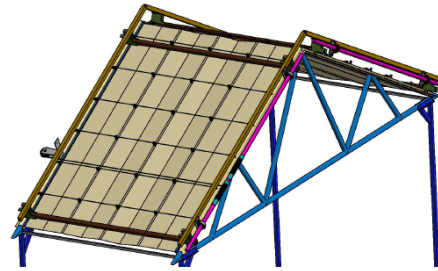
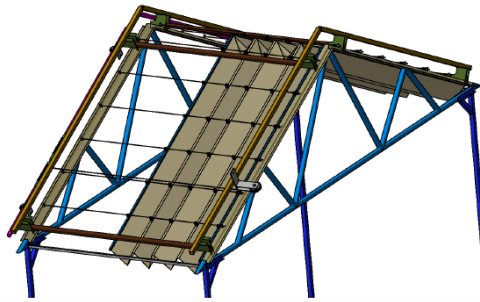


ADVANTAGES & BENEFITS OF BLUSTAL RETRACTABLE GREENHOUSE

BLUSTAL Retractable greenhouses offer several benefits compared to traditional fixed structures. Here are some of the advantages:

- 1. Temperature Control:** Retractable roofs or walls allow you to control the temperature inside the greenhouse more effectively. You can open up the structure to regulate heat during warmer days and close it to retain warmth during cooler periods. This flexibility enables you to create an optimal environment for plant growth throughout the year.
- 2. Ventilation:** Proper airflow is essential for plant health, as it helps prevent issues like mildew and pests. Retractable greenhouses can be designed with adjustable vents or windows, allowing you to regulate airflow as needed. This helps maintain optimal growing conditions and ensures good air circulation for your plants.
- 3. Natural Light:** Retractable greenhouses make it easier to optimize natural light exposure for your plants. You can adjust the roof or walls to maximize sunlight during the day, promoting photosynthesis and healthy growth. On cloudy days or during periods of excessive sunlight, you can adjust the structure to control light levels and prevent damage to your plants.
- 4. Versatility:** The retractable design of these greenhouses allows for versatility in plant cultivation. You can grow a wider range of crops, including those that require different environmental conditions. For example, you can create separate microclimates within the greenhouse to accommodate various plant species or stages of growth.
- 5. Extended Growing Season:** By providing protection from harsh weather conditions, retractable greenhouses extend the growing season for your plants. You can start planting earlier in the spring and continue growing later into the fall or even winter, depending on your location and climate. This allows you to harvest fresh produce year-round and maximize your garden's productivity.
- 6. Space Optimization:** Retractable greenhouses are often designed with space-saving features, making them suitable for small or urban gardens. Their compact footprint and adjustable design make efficient use of available space, allowing you to maximize growing area without sacrificing functionality.
- 7. Aesthetic Appeal:** In addition to their practical benefits, retractable greenhouses can enhance the visual appeal of your garden or property. Their modern design and customizable features can complement various architectural styles and landscaping designs, adding beauty and charm to your outdoor space.

Overall, retractable greenhouses offer flexibility, control, and efficiency, making them an attractive option for gardeners looking to optimize their growing conditions and extend their gardening season.



Retractable roofs Poly house offer opportunities to take advantages of both a controlled and outdoor environment.

Specification

- **Retractable roof coverings**

Roof covering material UV stabilized, woven and coated polyethylene, 0.4 mm thick.

- **Drive system**

The retraction of roof is automated powered by gear motor, cable and pulley direct drive system using PLC.

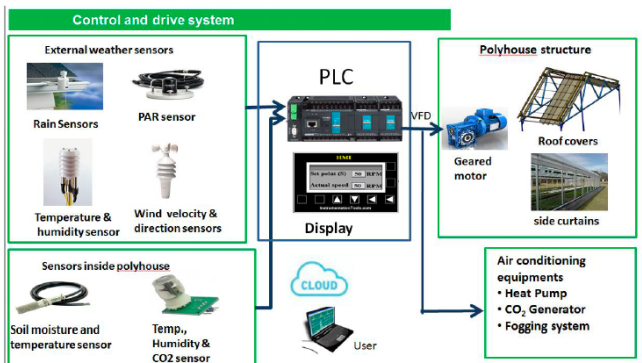
- **Structure**

A - type frame structure:

Size of the poly house: 16m x 24 m (~380 m²).

Retractable roof used to manipulate following parameter based on outside weather conditions and crop requirements:

- Light quantity and duration
- Leaf, fruit and soil temperatures
- Temperature & Humidity
- CO₂
- Transpiration
- Water stress



Crops grown in Retractable-roof Polyhouse

Vegetables : Cucumber, Cherry Tomoto, Cabbage, Capsicum, Broccoli, Lettuce, Bitter Gourd, Cauliflower, Coriander, Spinach, etc.

High value floriculture : Carnation, Gerbera, Orchids.

This technology is very beneficial to farmers

- Farmers can cultivate both seasonal and non-seasonal crop through the year which can fetch higher value and income
- Less requirement of pesticide use as crop is less susceptible to pest and diseases.
- Increase in harvesting period
- Reduced Cost of crop cultivation
- Farmers get higher yield and quality of produce through the year
- Nursery can be grown before transplanting into open field





Manufacturers & Exporters

BLUE STALLION EQUIPMENTS (P) LTD

4585, STREET-14, NEAR KWALITY CHOWK,
SHIMLAPURI, LUDHIANA-141003 (INDIA)

PH: +91-82890,20357, +91-161-5045218, 5086147

E. MAIL: stallionindia@gmail.com



www.blustal.com